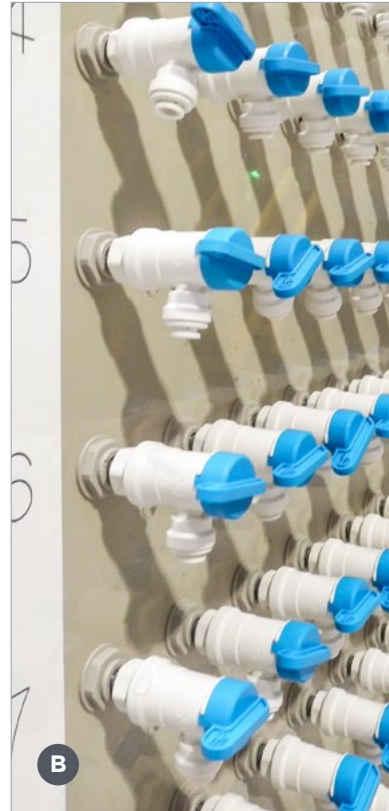


Work Profile

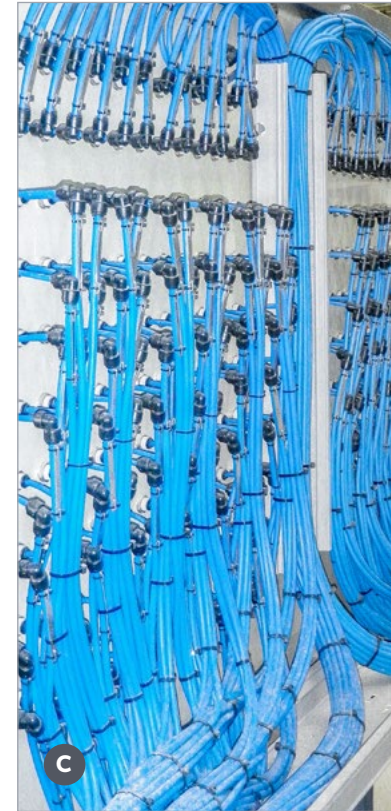
Sampling Station at a WA Desalination Plant



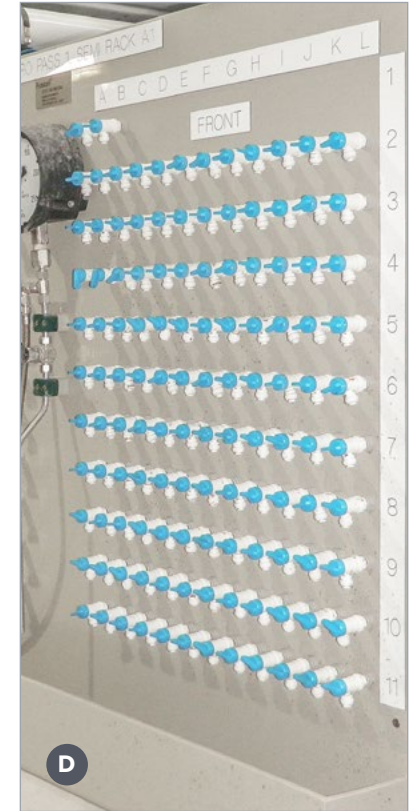
A Overview: Sampling station showing all outlets, complete panel and steel frame. Installed on site.



B Front, left close-up: outlet taps with grid numbering.



C Rear, right: The reverse side of the panel showing organised tubing.



D Front, right: another sampling station located at the same site showing the grid labeling.

Dosing Panel Benefits

- + Polypropylene sheet fabricated, offering high

chemical resistance.

- + No steel frame, offering a corrosion free, fully supported design.
- + Custom engineered in-house design.

- + Assembled and fitted out to clients requirements.

- + Different arrangement of screens available.

- + Excellent reputation around Australia for quality, delivery and performance.

